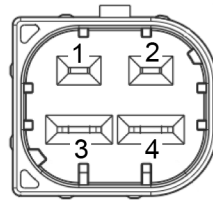
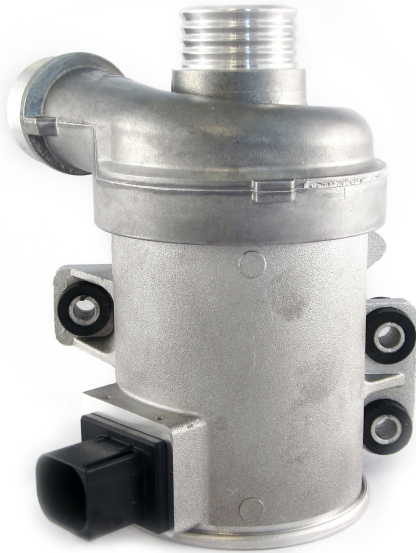


Pierburg “CWA400”

Pierburg's electric water pump in the increased capacity range.



- 1 - Signal (PWM)
- 2 - Signal (GND)
- 3 - Power (12V)
- 4 - Power (GND)

Pierburg CWA400

The CWA400 is the next development stage of the very successful principle the CWA200 used.

(A brushless and fully canned motor for instance)

This pump is supplying more than double the hydraulic performance at nearly the same dimensions.

Suitable mainly for engine cooling in combustion engine vehicles.

Specifications:

- Name: "Pierburg CWA400"
- Operation voltage: 8-16 volts
- Weight: approx. 2.15 kg
- Current consumption: 35.5A (36.3A max.) / (approx. 0.2mA in standby mode)
- Nominal diff. pressure: 0.85 bar *
- Flow rate: approx. 150l/min @ 0.85bar / 220l/min @ 0.55bar
- Speed: approx. 5900 rpm
- Temperature range: -40°C – 128°C (water) / -40°C – 140°C (ambient)
- Protection: IP67
- Part numbers: (e.g.) Pierburg – 7.03665.66.0 // BMW: 11517604027 / 11518625097 / 11518635089

Know-how:

* Pump pressure is not the same as the system pressure.

Those pumps can of course be used in normal automotive cooling systems with system pressures in the range of 0.8 to 1.2 bar for instance. The pump pressure or differential pressure expresses the 'resistance' of which the pump has to work against. (more or less)

Tip: A mechanical thermostat is responsible for about half of that resistance. (in most cars)

